

COWLEY

SIXTH FORM COLLEGE

2025/26 PROSPECTUS



**YOUR FUTURE.
YOUR SIXTH FORM.**



Apply Now!

HOW TO APPLY AND KEY DATES

OPEN EVENINGS

Thursday 17th October

Thursday 16th January



**September
to December**



Think about what subjects you
want to study



October Open Evening



Submit your application

**January
to April**



January Open Evening

Attend an interview



Receive your formal place

**May
to July**



Attend New Student
Welcome Day

August



**Collect your GCSE results
and enrol at Cowley Sixth Form!**

How to apply



You can complete your application to join Cowley Sixth Form College online, go to: cowleysixthform.org.uk or simply scan the QR code above

Or, you can complete a paper application form (you can request an application form by telephone: 01744 678 030). Once completed, return to Cowley Sixth Form College.

TAKE A LOOK INSIDE

Welcome & Meet the team	4
Why study at Cowley Sixth Form College?	6
Supporting you	8
Travel information	9
Your Future. Your Sixth Form	10
High Achievers	11
Our outstanding facilities	12
Student insights	14
Course Pathways	16
A-level Pathway	18
Vocational Pathway	26
Gateway	32
Enrichment	31
FAQ	34
Space to write your thoughts	35

Video prospectus



WELCOME



Welcome and thank you for your interest in Cowley Sixth Form College

Cowley is a special place. Every year, we welcome students into the Sixth Form from many schools across St Helens and further afield. We pride ourselves on the support offered to every individual that joins Cowley and truly believe that every one of our students has an amazing potential to succeed.

The move to Sixth Form can be challenging and you can be assured that there will be a team of experienced professionals to walk alongside you during your unique journey. At the same time, our high standards and expectations ensure that every individual develops the ability to become independent and responsible life-long learners, fully equipped with the skill set to progress in their chosen field.

Cowley is a larger than average Sixth Form which means we offer a wide portfolio of courses to our students. This ranges from traditional A-levels to vocational qualifications and career-based courses. Whatever your decision, you will be taught by staff who are willing to go that extra mile to ensure that you achieve your true potential.

Hopefully, this prospectus will give you an insight into the many opportunities Cowley Sixth Form College can offer; however, the real test is to see for yourself!

I look forward to having the opportunity to meet you in person at one of our college Open Evenings and wish you the very best of luck in your studies. **Your future. Your Sixth Form.**

Danny Watkins
Head of Cowley Sixth Form

Meet some of our team



Jo Wilde
Year Co-ordinator

Karen Garner
Study Area Supervisor

See more on Jo and Karen
on page 8

Reception, Admin and
Communications Team

Nicky Smart
Head of
Achievement



WHY STUDY AT COWLEY SIXTH FORM COLLEGE?

Course choice

We offer A-level, Vocational, Mixed and Gateway pathways. In addition, we have our popular work-related learning courses.

Want to mix and match A-levels with BTECs? No problem! We offer students the flexibility to mix their studies so they can pick and choose the courses they want.


Quality learning

Every class is the ideal scale to ensure that students receive feedback more quickly, receive more attention and assistance from the teacher. We find that students gain confidence more rapidly in small groups, rather than in a busy one.

High achievers are supported on our tailored programmes, including our new Excel Pre-Med course. See page 11 for more.

Did you
know...

In 2024, almost a third of
across St. Helens, Wigan



Your Future. Your Sixth Form

At Cowley Sixth Form, we believe that every person can reach their full potential, both inside and outside of the classroom. The strong enrichment programs outside lessons will nurture your development academically, culturally and professionally - there is something for everyone.

Learning in a friendly and supportive environment

All students have a dedicated tutor to offer regular one-to-one support, as well as an experienced pastoral team.

We pride ourselves on supporting students academically and pastorally to help them achieve their full potential.

Students who joined us were from schools in Wigan, Prescott, Ormskirk and Liverpool.

SUPPORTING YOU ON YOUR SIXTH FORM JOURNEY

Supporting you in your studies



Year Co-Ordinator

Jo Wilde is our Year 12 and Year 13 Co-ordinator, who provides support and guidance to our students, as well as ensuring a smooth transition for students joining the Sixth Form. Jo is typically a student's first point of contact for all aspects of college life, including helping students to engage in all aspects of the Sixth Form - from independent study to enrichment.

Study Area Supervisor

Cowley Sixth Form College has a full-time Study Area Supervisor, Karen Garner, to support students. All students are timetabled for supervised study with Karen to ensure that they are supported in their studies outside of the classroom.

Student Performance and Development Tutor

At Cowley Sixth Form College, we have a specialist team of Student Performance and Development Tutors (SPDT). Your SPDT will be your critical and professional friend whilst you are studying with us. You will meet with them each week and have regular one-to-one meetings to talk exclusively about you. Your SPDT will help you to settle quickly into college life and they will work with you

to ensure you achieve the best results possible. Your SPDT will help you to think about your goals, set targets to enable you to reach those goals and track your progress. Being a sixth form student is about being an independent learner and being able to self-evaluate, which means recognising your strengths and weaknesses and taking responsibility for your own learning.

The pastoral support will ensure that every individual is able to seek the help they need through a programme of regular one-to-one meetings in addition to larger group sessions, addressing key aspects of personal development (e.g. mental health awareness) alongside a strong focus on progression planning for life after Sixth Form.

Supporting you financially

If you are worried that you may struggle with the associated costs of attending college, you may be eligible to receive financial support through the 16-19 bursary.

The students most in need of financial support will be eligible to receive a bursary of £1,200 each year. In addition, for other students facing genuine financial difficulties, there is the Discretionary Bursary Fund.

Bursary can be used to pay for:

- Bus Pass
- Food/drink daily allowance in our Hub
- Equipment/resources for subjects

We can help students to understand what they could get and to assist with any applications for support.



To view Bursary
information

TRAVEL INFORMATION - HOW TO GET TO COWLEY SIXTH FORM



Cowley Sixth Form is located in Windle, around a mile from St. Helens Town centre and is quite easy to get to.

Walking/cycling to college

Cowley Sixth Form is within walking/cycling distance of Windlehurst, Windle, Eccleston, Newtown and Dentons Green.

Driving to college

We currently have a number of students who drive to college. For students who can drive, the Sixth Form has parking available externally, but please note that spaces are limited.

Transport links

For those travelling to St. Helens Town Centre from areas such as Liverpool, Wigan, Warrington, there are a number of buses that travel from the main bus depot in St. Helens towards City Road/Dentons Green regularly throughout the day.

Arriva offer money-saving student tickets. Please view their website to find out more.

Cowley Sixth Form bus

We have a dedicated bus just for Sixth Form students that travels from Ashton-in-Makerfield, heading through Newton-le-Willows, Haydock, Laffak and Haresfinch, before arriving at the college (and then back again after college).

- Warrington Road (opposite Byrchall High School)
- Ashton Road (Hope Academy)
- Vista Road
- Penny Lane
- Ship Inn, Blackbrook Road
- Chain Lane
- Laffak Road
- Carr Mill Road
- Woodlands Road
- Washway Lane
- Hard Lane
- Cowley Sixth Form College

YOUR FUTURE. YOUR SIXTH FORM.

Our students are at the **heart**
of Cowley Sixth Form

NEW FOR 2025

We are offering students a taster driving lesson and a discount card to use in local shops.

Chance to become a Student Leader or Subject Mentor and work with younger students

Rewards trips, as well as subject trips, both in the UK and abroad

The flexibility to choose the courses and pathway that works best for you!

Your voice matters! Current students are involved in the building redesign

Students can become Content Creators to create content for our social media!

Cowley Sixth Form is a standalone site with a canteen, study area, break out space and parking for Sixth Form students

Dedicated 1-to-1 support

Address staff by their first name



HIGH ACHIEVERS PROGRAMMES AT COWLEY SIXTH FORM



The high achievers programmes at Cowley Sixth Form are designed to motivate and challenge our most able students.

We have three high achievers programmes:

Cowley Honours Programme

The Honours Programme is aimed to help equip you with skills in wider academic research to help you reach the very best universities. The programme includes inspiring trips and additional qualifications.

Entry Requirements

A minimum of 4 GCSE qualifications graded 7-9.

Cowley Scholars Programme

This programme offers financial support for academic progress, alongside a programme of undergraduate level lectures across the academic year to stretch and challenge you outside of your subject specialisms.

Entry Requirements

A minimum of 5 GCSE qualifications graded 8 or 9.

New for 2025

Excel - Pre-Med Programme

See right column.

NEW FOR 2025

Excel - Pre-Med Programme

The Excel Pre-Med Programme supports students applying for Medicine, Dentistry and degrees linked to the healthcare profession. The programme prepares students for Medical school applications, interviews and UKCAT/BMAT. The course also supports students wishing to enter medical research and degree courses at leading universities.

Excel Pre-Med offers:

- Medical workshops
- Lectures by leading academics, doctors and consultants in the medical field
- Work with Russell Group universities such as Manchester and Liverpool University to deliver hands on workshops and specialist lectures
- Medical Summer Schools at leading Universities and Healthcare weekends hosted nationally
- Work with a projects facilitated by PHD researchers
- Mentoring by Cowley Alumni currently studying Medicine, Dentistry and various other healthcare degrees
- Support and opportunities for students to arrange work experience at local hospitals, care homes, charity shops and hospices.

A COLLEGE WITH OUTSTANDING FACILITIES



STAND-ALONE SITE

COWLEY SIXTH FORM
IS A STAND-ALONE
BUILDING WITH ITS OWN
DEDICATED GROUNDS



SPORTS

ALL YEAR 3G PITCH
SPORTS HALL
WEIGHTS ROOM
GYM

LINKS

SAINTS
SPORTS
OPPORTU
PROFE



**WIFI
THROUGHOUT**



LABS AND WORKSHOPS

ENGINEERING SPACE
TEXTILE/GRAPHICS ROOM
CONSTRUCTION ROOM
DEDICATED LABS



PERFORMING ARTS

SPRUNG DANCE FLOOR
DANCE STUDIO
PRACTICE ROOMS



STUDY SPACE

WELL-EQUIPPED LIBRARY
DEDICATED, QUIET STUDY
SPACE



WORKS WITH SAINTS RFC

SAINTS TEAM TRAIN ON SITE
SAINTS STUDENTS HAVE AN
OPPORTUNITY TO WORK WITH
PROFESSIONAL ATHLETES



STUDY RESOURCES

COMPUTER SUITES
APPLE MAC SUITE
24 HOUR NETWORK
ACCESS



ANIMAL CENTRE

HEATED AQUARIUMS
AVIARY
OUTDOOR PENS



Isaac Moosbally, A-level Pathway

I particularly enjoy the freedom and responsibility that comes with being a sixth form student.

My class sizes are fairly small and this means that I can spend more time with my teachers for 1-2-1 learning.



Jess Melia, Mixed Pathway

I feel like there is more freedom here at sixth form as we are taking subjects of our own choice which I find more enjoyable. The teachers also offer so much support to us by giving us the resources we need and through extra sessions outside of lessons.



Grace Richardson, Gateway Pathway

The Gateway programme was a good starting point for me when joining Sixth Form. I worked hard for a year and with support from staff, I successfully completed the course and am now studying Level 3 Musical Theatre, Music and Health and Social Care.



Student insight into life at Cowley Sixth Form



Daniel Keavey, Head Boy

At Cowley Sixth Form, everyone strives for you to be your best and will go above and beyond to give you every opportunity to do so.

The opportunities to better yourself, both inside and outside the classroom, are endless and every single staff member wants to make sure that you succeed at everything you do.

It has remained the fantastic learning environment that drew me towards it in the first place, and it certainly has not disappointed.

Daniel



Abigail Richardson, Head Girl

I chose Cowley Sixth Form because of the small class sizes, as I feel that the subject teachers can take time to make sure all students are reaching their full potential.

I also think there is a great support system of staff, so I am comfortable to voice any concerns.

The opportunities they provide here are great ways for students to grow as individuals, teaching us skills to utilise in our future.

Abigail

COURSE PATHWAYS



View courses
from page 18



View courses
from page 26

A-LEVELS

Want to follow the traditional academic route to university? We offer a wide choice of A-levels which are delivered by specialist teachers in a modern campus.

New for 2025:

A-level Economics
A-level Classical Civilisation
HSK 4 Mandarin

VOCATIONAL COURSES

Designed to meet the needs of employers, Vocational courses are work-related qualifications for learners taking their first steps into employment or planning to enter university.

New for 2025:

Esports



Student insight
Gabbi Levine
Scan to watch video



Student insight
Oliver Pennington
Scan to watch video



FOR YOUR INFORMATION

The curriculum at Cowley offers students the flexibility to choose the pathway that works best for them.

For Level 3 study, a typical combination would be between three or four subjects. Students

are able to choose A-levels, Vocational courses, or a combination of both.

There are four pathways that students can choose from and these are detailed below.



[View courses from pages 18 - 30](#)



[View course page 32](#)

MIXED PATHWAY

Want to study a combination of A-levels and Vocational courses? We've got you covered.

Many of our students choose this route to mix and match the courses that work to their strengths and future pathways. With over 40 courses to choose from, this is a popular option for many.

GATEWAY

A course that is unique to Cowley, allowing students with modest GCSE results to study Level 2 Business or Esports, in conjunction with Functional Skills and GCSE resits in Mathematics and English Language.

New for 2025:
Esports – Level 2



Student insight
Nik Thomas
Scan to watch video



Student insight
Grace Richardson
Scan to watch video



A-LEVEL

Want to follow the traditional academic route to university?

We offer a wide choice of A-levels which are delivered by specialist teachers in a modern campus.

An A-level is a two-year programme that culminates in exams. Some courses have a component of coursework and/or controlled assessment.

New for this year, we are delighted to offer students the chance to study A-level Economics and A-level Classical Civilisation.

HOW MANY SUBJECTS YOU CAN CHOOSE?

A typical combination would be between three and five subjects. Students are able to choose A-levels, BTECs, or a combination of both.

ENTRY CRITERIA

To study at Cowley Sixth Form College, you must have achieved a minimum of five GCSEs or equivalent, graded 9 - 4, across four separate subjects, including GCSE Mathematics and English Language.

In addition, a positive college interview is required.

A few courses have specific entry requirements. Relevant details can be found in the individual subject descriptions.



Need more details? Scan QR for more





A-LEVEL COURSES

Art and Design	20
Biology	20
Business	20
Chemistry	20
Classical Civilisation	20
Criminology (Applied Diploma)	20
Economics	20
English Language	20
English Literature	21
Ethics, Philosophy & Religion	21
French/German	21
Further Mathematics	21
Geography	21
History	21
Law	21
Mandarin (HSK 4)	21
Mathematics	22
Photography	22
Physical Education	22
Physics	22
Politics	22
Psychology	22
Sociology	22

Art And Design

This exciting course covers all the core elements of Art and Design and is designed to allow you to develop your artistic skills and gain confidence. The course is flexible and offers students the freedom to explore and work across the broad spectrum of art disciplines.

Biology

The origins of living things and how they work is fundamental to the world we live in and, whether your interest is in the animal world, marine life, humans or plant life, the study of Biology is the core of further knowledge and discovery.

In addition to the College entry requirements, a grade 6 - 6 or above in GCSE Combined Science, or a grade 6 in GCSE Biology is required.

Business

Business is one of the most dynamic subjects you can choose! You will be immersed in the business world, exploring and critically reviewing topics from a national and global perspective.

Chemistry

Chemistry is at the forefront of advances in designing new materials, energy use, drug development and technology. Chemistry explores the building blocks of all living and nonliving substances.

In addition to the College entry requirements, a grade 6 - 6 or above in GCSE Combined Science, or a grade 6 in GCSE Chemistry is required.

Students are also required to achieve a minimum grade 6 in GCSE Maths. We recommend students study either A-level Maths or Core Maths alongside Chemistry.

**NEW FOR 2025
Classical
Civilisation**

Classical Civilisation is the fascinating study of ancient Greek and Roman Civilisation, encompassing a huge variety of disciplines including literature, history, archaeology and art.

**Criminology
Level 3 Applied
Diploma**

Ever wondered...What makes someone a serial killer? How do we decide what behaviour is against the law? This two-year course will hopefully help you answer these questions and more...

**NEW FOR 2025
Economics**

Economics is a fascinating and thought-provoking subject that will help to explain why people make certain decisions, how markets work, and why some people earn so much when others don't.

In addition to the College entry requirements, a grade 6 in Maths and a 5 or above in English Language is required.

English Language

Both dynamic and relevant, this course explores how our language has evolved over time. Students will explore a variety of contexts, genres and audiences and will produce original creative writing pieces.

In addition to the College entry requirements, a grade 5 or above in GCSE English Language is required.

English Literature If you're passionate about reading, then English Literature is the qualification for you. By encountering a range of views and emotions in modern and classic texts, students can explore important issues while voicing their own opinions.

In addition to the College entry requirements, a grade 5 or above in GCSE English Language or English Literature is required.

Ethics, Philosophy & Religion This subject considers complex issues and investigates the nature of religious experience and whether these can be explained by science, psychology or supernatural means.

French/German Students will study highlights of the target language country's artistic culture, including music and cinema, and learn about political engagement. Learning a language is a long term investment – an asset to adult life.

In addition to the College entry requirements, a grade 5 or above at GCSE in the language to be studied is required.

Further Mathematics A-level Further Mathematics provides a great opportunity for enthusiastic and capable mathematicians to broaden their subject knowledge.

In addition to the College entry requirements, a grade 7 or above in GCSE Mathematics is required.

Geography Geography is concerned with many key issues of the 21st century: biodiversity, sustainability, population change and climate change. Students will study current issues that shape the world they live in as well as developing a variety of employable skills, such as GIS skills and data analysis.

History Everything we do, everything that happens every day is part of and defined by history. So why wouldn't you want to know more? Studying history provides opportunities to engage with ideas, societies and people that existed centuries ago and sometimes merely decades ago.

Law Through studying A-level Law, you will learn about how laws are made, how the criminal justice system works in England and how to work out whether someone is criminally liable for a particular offence.

**NEW FOR 2025
Mandarin (HSK 4)** Building on what students have learnt so far in their GCSE Mandarin studies, students will learn more deeply about Chinese film and literature and will cover topics such as family, work culture and traditions.

The Mandarin offer in the sixth form is suitable for students wishing to continue their study of Mandarin beyond GCSE to an advanced, enriched level.



Need more details? Scan QR for more

Mathematics

A-level Mathematics covers a wide range of topics that will extend your knowledge of algebra and trigonometry and introduce you to exciting new concepts such as differentiation and integration.

In addition to the College entry requirements, a grade 6 or above in GCSE Mathematics is required to study this subject.

Photography

Photography is about using the camera as a creative tool to record the world around you. Developing an excellent understanding of composition is the foundation for all photography; you will develop your own great sense of style and self expression that will engage any audience.

Physical Education

This course covers a wide range of theoretical areas such as: anatomy & physiology, biomechanics and sports psychology. A-level PE students work closely with Saints' physiotherapists as part of their anatomy and physiology lessons and during the sports injury unit.

Physics

The first year begins with the weird and wonderful world of particles and quantum physics. Your second year will develop your understanding further, so you'll actually understand what $E=mc^2$ is about. We look at astrophysics to find out how to estimate the age of the universe.

In addition to the college entry requirements, a grade 6 - 6 or above in GCSE Combined Science, or a grade 6 in GCSE Physics is required. A GCSE Mathematics grade 6 or above is also required. It is recommended that students who study Physics should also study A-level Maths.

Politics

Lively, relevant, thought-provoking... however you describe government & politics, there's no denying that it's one of the most interesting and engaging A-levels you can study.

Psychology

Psychology is a subject that focuses on human behaviour and mental processes. A big part of the course is looking at theories to explain certain aspects of human behaviour and assessing the differences across cultures, genders and approaches.

Sociology

Ever wondered how we developed into the society we are today? How the way you see yourself determines the way people identify you? A-level Sociology will help you to make sense of the society we live in and to understand the cultural and identity issues which affect us all.



Need more details? Scan QR for more

NEW FOR 2025

ECONOMICS

Economics is a highly valuable, academic subject for those who have an interest in what is happening in the world around them.

This course intends to blend theory with real-life application in the search for better ways to manage our economy, resulting in a more equitable society.

In the first year, you will develop a strong understanding of both microeconomics and macroeconomics. Microeconomic topics include: the nature of economics, how markets work, market failure and government intervention. Macroeconomics topics include: measures of economic performance, aggregate demand and supply, national income, economic growth and macroeconomic objectives and policies.

The second year builds upon the economics already learnt in your first year, considering economic concepts and theories in greater depth and integrating understanding across topics. Additional microeconomic topics include business growth, business objectives, revenues, costs and profits, market structures and the labour market.

Macroeconomic topics will be applied in a global context and will develop understanding on international economic, poverty and inequality, emerging and developing economies, the financial sector and the role of the state in the macroeconomy.

Economics is widely accepted as a challenging and rewarding A-level. Upon completion of this course, you will be prepared for further study at university or be ready for the world of work.

There are around 200,000 jobs in the UK that are economics related. Careers include accountancy, banking and finance, the civil service, journalism, consultancy, professional economist and stockbroker.

How is the course assessed?

Assessment is based on three examinations at the end of the second year.

Entry requirements:

In addition to the College entry requirements, a grade 6 in Maths and a 5 or above in English Language is required.



NEW FOR 2025

CLASSICAL CIVILISATION

The cultures of ancient Greece and Rome have had a massive influence on the world we live in today.

Classical Civilisation A-level focuses on these cultures and is a wide-ranging subject involving the study of literature, art and material culture, ancient thought, ideas and history.

So, if you want to connect with the great characters in Homer's *Odyssey* (which other subject offers Polyphemus, a one-eyed cannibalistic giant?), the love poems of Ovid (how do you get that girl?) or the social history of the societies that produced those great works, Classical Civilisation might be just what you are looking for. Find out, for example, why our immigration fears are not new by studying the attitude of the Greeks towards Persians. These are interesting discussions that are directly relevant to today's world.

You don't need to know any languages, all the texts are in translation, and it doesn't matter if you haven't studied the Greeks and Romans since primary school; all you need is an interest in the ancient world and its cultures.

Are you are looking to find a different and unusual subject which you will enjoy studying? Are you thinking further ahead about university, apprenticeships or employment? Classical Civilisation might be the perfect choice since it puts you in an excellent position to seek employment and wider opportunities. Not only do you acquire specific Classical knowledge, but also important transferable skills such as analysing sources, developing independent, critical and evaluative approaches alongside a valuable understanding of cultures very different to your own.



MANDARIN (HSK 4)

Mandarin is a truly fascinating course covering a large range of topics and areas of interest for students.

This course focuses on developing more advanced speaking reading, listening, and writing skills.

This course will enable students to:

- enhance their linguistic skills
- develop their knowledge and understanding of the language
- build fluency and confidence
- understand more Chinese culture related to the course content (culture)
- have discussions around general topics
- understand the function and grasp the usage of some important Chinese language points

All learning materials will be provided throughout the course.

The Mandarin offer in the sixth form is suitable for students wishing to continue their study of Mandarin beyond GCSE to an advanced, enriched level.



VOCATION

Designed to meet the needs of employers, BTECs are work-related qualifications for learners taking their first steps into employment or planning to enter university.

BTECs tend to be more vocational and practical.

Did you know that nearly all universities accept BTECs in relevant subject areas, similar to how they would with equivalent A level qualifications.

New for this year:
Esports.

HOW MANY SUBJECTS YOU CAN CHOOSE?

A typical combination would be between three and five subjects. Students are able to choose A-levels, BTECs, or a combination of both.

ENTRY CRITERIA

To study at Cowley Sixth Form College, you must have achieved a minimum of five GCSEs or equivalent, graded 9 - 4, across four separate subjects, including GCSE Mathematics and English Language.

In addition, a positive college interview is required.

A few courses have specific entry requirements. Relevant details can be found on individual subject information pages.



Need more details? Scan QR for more



VOCATIONAL COURSES

Animal Care	28
Graphics and Textile Design	28
Children's Play, Learning and Development	28
Computing	28
Construction	28
Digital Design and Content Creation	28
Creative Digital Media - Film and Video	28
Engineering	28
Esports	28
Health and Social Care	29
Music Performance	29
Professional Musical Theatre	29
Nursing Cadetship	29
Applied Science	29
Sports Coaching and Development	29
Travel and Tourism	29
Uniformed Protective Services	29



Animal Care	This course will give you a full understanding of animal care, covering the practical, scientific and ethical aspects of caring for animals. As part of the course, you will work with a variety of birds, mammals and reptiles in our bespoke animal care facility.
Graphics and Textile Design	Are you passionate about design and see yourself working in the rapidly growing creative industries? If you are creative with an interest in the arts, then this is the ideal course for you to study.
Children's Play, Learning and Development	Students will have the opportunity to develop their skills and the knowledge necessary to work with children and young people. Students are given access to specialist equipment, including interactive babies, pregnancy simulator and model infants exposed to various lifestyle induced disorders.
Computing	If you intend to pursue a career in computing, ICT or games development, or have a strong interest in this area, then the BTEC Level 3 Extended Certificate in Computing is perfect for you.
Construction (Level 2)	<p>This course offers an insight into the construction industry ranging from the initial planning stage through the design and building process. The course includes two days a week on placement.</p> <p>It is anticipated that students will typically have a GCSE profile of 3/4 and may not have Mathematics or English Language GCSE at grade 4 or above. In this instance, we can offer a resit in one of those subjects.</p>
Digital Design and Content Creation	This course will give students the opportunity to learn about the digital world, including app production, website production and coding, digital graphics and manipulation linked to digital publishing and photography.
Creative Digital Media - Film and Video	This qualification is designed to provide a technical introduction to digital film and video production. Learners develop skills in areas such as single camera techniques, storyboarding and film editing.
Engineering	<p>Delivered over two years, this Level 3 Extended Certificate will provide students with both practical and theoretical skills to develop a career in the engineering sector. Each unit focuses on key elements of industry.</p> <p>In addition to the College entry requirements, a grade 5 or above in Mathematics and a grade 5 or above in Science is required.</p>
NEW FOR 2025 Esports	The course has been developed to meet the demand for skills in Esports. Esports offers a unique opportunity to study a sector that crosses over multiple subject areas such as sport, marketing, enterprise, IT and creative. This course is suitable for learners looking to progress to employment in the Esports industry, possibly via an apprenticeship, or entering higher education.

Health and Social Care	This popular course offers a practical and vocational route into fields of Health & Social Care employment. Students are given access to a wide range of specialist equipment and they benefit from placements within the St Helens & Knowsley NHS Trust.
Music Performance	If you are looking to become a cutting-edge music performer, then this is the course is for you. This course will provide you with access to some of the leading products and artists within the industry. You will receive one free instrumental lesson a week.
Professional Musical Theatre	Here at Cowley Sixth Form College, we focus on the development and refinement of vocal, acting and dance skills and techniques preparing you for drama school and university training.
Nursing Cadetship	<p>This programme is a brilliant opportunity to start your nursing career, achieve a valuable qualification and gain plenty of practical experience. You will study a BTEC level 3 Extended Diploma in Health and Social Care (equivalent to three A-levels).</p> <p>Your placements within St Helens & Knowsley NHS Trust consist of two full days per week in different care settings.</p>
Applied Science	<p>This course consists of units covering topics across Physics, Chemistry Biology and there is an emphasis on practical investigative work.</p> <p>In addition to the College entry requirements, a grade 4 - 4 is required in Combined Science.</p>
Sports Coaching and Development	As part of this course, you will learn about the different aspects of sport, from coaching to fitness testing and the organisation and development of sport.
Travel and Tourism	The study of Travel and Tourism aims to develop a student's knowledge and experience in geography, customer service and employability skills. The course will develop key skills such as creativity, problem solving, communication, and business management which are transferable into the world of employment.
Uniformed Protective Services	This popular course is designed to equip students with the knowledge understanding and skills needed for a career in the public and uniformed services. This shouldn't put off those who aren't considering a career in public services though, as this course includes many sociological, political, leadership and physiological units.



Need more details? Scan QR for more

NEW FOR 2025

Esports

The Esports industry is growing exponentially in the UK and globally. As the industry grows, more and more employment opportunities are being created.

To have a successful career in the Esports industry, you will need to have a detailed understanding of it.

In the first year you will study:

- Esports Skills, Strategies and Analysis. In this unit you will explore a range of professional and grassroots (amateur) Esports teams and the tournaments in which they compete. You will review the different genres of Esports games and the different age rating systems for video games.
- You will explore different career pathways in Esports and other related industries and the skills and experience you will need to secure jobs in these areas.
- Enterprise and Entrepreneurship in the Esports Industry. In this unit, you will create a team and play competitive games against others. You will develop the understanding, knowledge and skills to enable you to analyse performances in competitive Esports games.

In the second year, you will study:

- Enterprise and Entrepreneurship in the Esports Industry. In this unit, you will gain an understanding of what makes entrepreneurs and enterprises in the Esports industry successful. You will also understand how you can then plan to set up your own Esports start-up enterprise. You will learn the skills necessary to pitch your Esports enterprise plan to stakeholders.
- Health, Wellbeing and Fitness for Esports Players. In this unit, you will look at the important elements of health and wellbeing and how they influence Esports in its widest sense.

How is the course assessed:

There are no externally-assessed units in this qualification. All units are internally assessed.

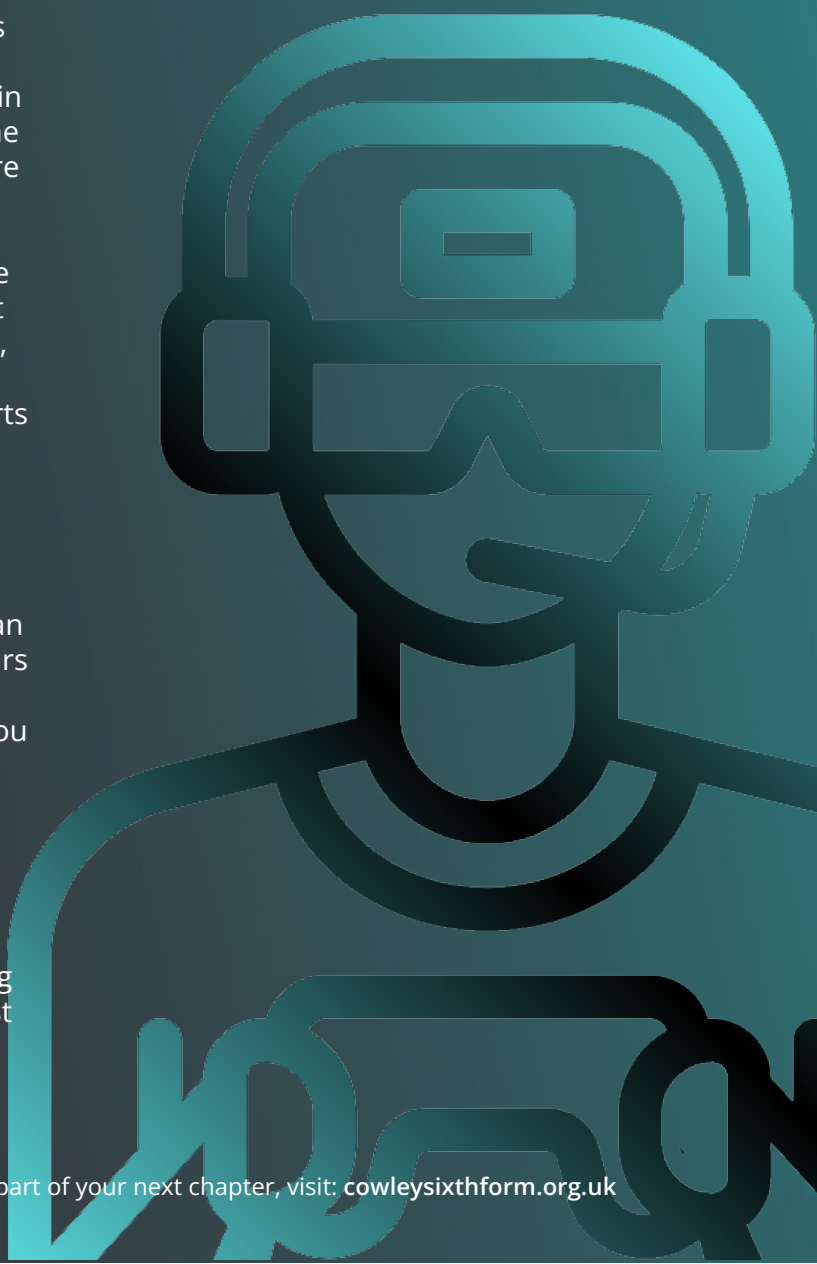
What could this qualification lead to:

Jobs that are available in these areas include:

- Esports player
- Team coach
- Events organiser
- Shoutcaster and presenter
- Social media influencer
- Video production editor
- Photographer

Entry requirements

5 GCSEs or equivalent, including Grade 4 in English and Maths.



ENRICHMENT AT COWLEY SIXTH FORM

We want you to achieve your potential and flourish in and out of the classroom.

As well as developing you as a person, enrichment is a social part of college life where you will be able to make new friends with similar interests. Enrichment activities change each term, offering a truly broad programme for students.

The enrichment programme at Cowley Sixth Form is a key strength of the college and staff go above and beyond to ensure that as many clubs and activities run as is possible.

Students play a huge part in the enrichment on offer, and they are encouraged to be involved in suggesting new activities.

Students can participate in a wide range of activities, including:

Eco Club

Student
Content
Creators

French and
Spanish

Chinese
Language
and Culture
Club

Rock
School

Girls Rugby

Weights

Annual
Musical

Girls
Football

Football

All students are encouraged to put ideas forward for new enrichment.
What would you like to take part in as part of your sixth form journey?
Your Future. Your Sixth Form

GATEWAY PROGRAM

This course is specifically designed to provide a transitional year for students who are not yet ready to embark on a Level 3 programme but are keen to move on to a Sixth Form College.

The intention is that students would be with us for a total of 3 years; 1 year on this programme and on successful completion, another 2 years studying the Level 3 courses of their choice.

A designated study base and a small team of teachers delivering the programme provides a supportive environment in which students can mature, develop and achieve further qualifications in core subject areas. This would enable them to progress to further studies or apprenticeships following the successful completion of this one-year course.

Course hours over a two-week period

Cambridge Technical in Business (L2) or Esports (L2)
9 hours

Functional Skills and GCSE English Language
6 hours

Functional Skills and GCSE Mathematics
8 hours

Enrichment
2 hours

Tutorial
2 hours

Supervised Study
4 hours

Entry Requirements

To be discussed at interview.

Y MME



FREQUENTLY ASKED QUESTIONS

How many subjects will I study?

- ✓ Most students will study three subjects in the Sixth Form.
- ✓ High achievers may be able to take a fourth or even fifth subject.
- ✓ Students can take A-levels, BTECs or a combination of both qualifications.

What are class sizes like?

- ✓ Class sizes are usually smaller than at GCSE, to allow teachers to give more of their time each lesson to each student.
- ✓ Small class sizes allow for extra support from your subject teachers.

FAQ

How and when do I apply?

- ✓ Applications open in September and run through until enrolment in August.
- ✓ We advise applicants to submit their application before the Christmas break.

Is Sixth Form like high school?

- ✓ Sixth Form life is totally different to what you will be used to in high school, for example, in Sixth Form, you can address staff by their first name.
- ✓ You will study around three to five subjects and you will have time in which to study further or to relax.
- ✓ Sixth form gets you ready for university, an apprenticeship or work and the environment is more adult than high school.

How much work will I get?

- ✓ Work will be different for each subject.
- ✓ As a rule of thumb, you should dedicate at least 4/5 hours per week per subject for independent study.

When will I have an interview?

- ✓ Once you have applied, you will be contacted to attend an interview to secure your place from January 2025.

SPACE TO WRITE YOUR THOUGHTS

Use this space to write down the courses you are interested in and any questions that you might have. This may help when you're applying or help to prompt you during your interview.

Questions I Have

Courses I am interested in

The Pathway that suits me best is

- ☐ A-level
- ☐ Mixed
- ☐ Vocational
- ☐ Gateway

Space for comments/notes

YOUR FUTURE. YOUR SIXTH FORM.



Apply online



COWLEY SIXTH FORM COLLEGE

Principal: Mr Cormack
cowleysixthform.org.uk

Head of Sixth Form: Mr Watkins



Please note that all courses, including their entry requirements, are subject to change and are delivered depending on demand and other factors.