

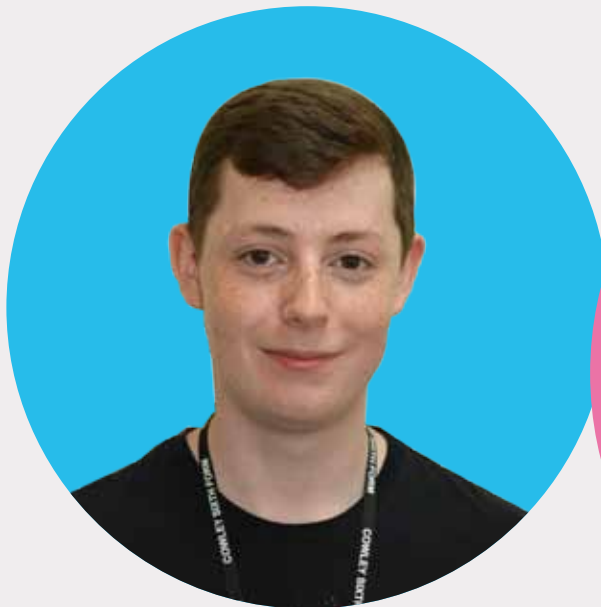
WANT TO BE//BE HAPPY//DREAM BIG//WORK HARD//MAKE IT HAPPEN//THE WORLD IS YOUR OYSTER//BE BRAVE//START SOMETHING NEW//



COWLEY
SIXTH FORM COLLEGE

2024/25 PROSPECTUS

YOUR NEW CHAPTER STARTS [HERE](#)

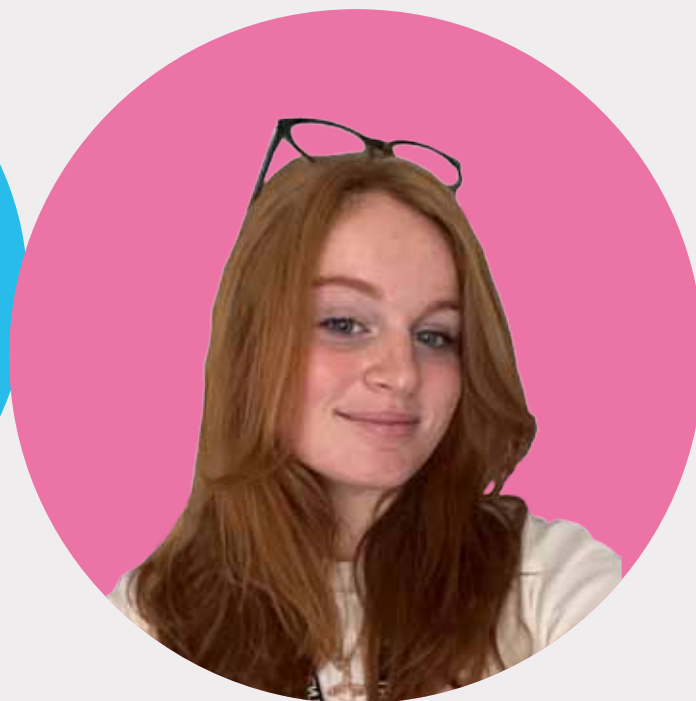


The staff at Cowley Sixth Form College are incredibly kind and helpful, and you are treated like a young adult.

There are many opportunities for enrichment outside of the classroom, and this is a really great way to meet new people with the same interests as you.

Jack

Jack Swift
Head Boy



I chose Cowley Sixth Form College as I found all the teachers really enthusiastic about their subjects at the open evenings.

The staff go above and beyond to make sure everyone is supported and that all students enjoy the subjects they study.

Outside of lessons, there are so many activities for students to get involved with from sports to chess. There is something for everyone here at Cowley Sixth Form College.

Holly

Holly Bullen
Head Girl

TAKE A LOOK INSIDE

Welcome & Meet the team	4
Why study at Cowley Sixth Form College?	6
Supporting you	12
Life at Cowley Sixth Form College	16
Our outstanding facilities	18
Opportunities for High Achievers	22
Cowley Honours Programme	24
Cowley Scholars Programme	25
Student success	26
Enrichment	29
Careers guidance and work experience	33
Choosing what courses to study	34
A-Levels	36
BTEC	46
Foundation	56
Applying	58
FAQ	59

Video prospectus



WELCOME

Meet some of
our team



Mrs Wilde
Year Co-ordinator

Mrs Garner
Study Area Supervisor

See more from Mrs Wilde and Mrs Garner
on page 12

Welcome and thank you for your interest in Cowley Sixth Form College

Cowley is a special place. Every year, we welcome students into the Sixth Form from many schools across St Helens and further afield. We pride ourselves on the support offered to every individual that joins Cowley and truly believe that every one of our students has an amazing potential to succeed.

The move to Sixth Form can be challenging and you can be assured that there will be a team of experienced professionals to walk alongside you during your unique journey. At the same time, our high standards and expectations ensure that every individual develops the ability to become independent and responsible life-long learners, fully equipped with the skill set to progress in their chosen field.

Cowley is a larger than average Sixth Form which means we offer a wide portfolio of courses to our students. This ranges from traditional A-levels to vocational qualifications and career-based courses. Whatever your decision, you can guarantee that you will be taught by experts in the subject who are willing to go that extra mile to ensure that you achieve your true potential.

Hopefully, this prospectus will give you an insight into the many opportunities Cowley Sixth Form College can offer; however, the real test is to see for yourself!

I look forward to having the opportunity to meet you in person at one of our college Open Evenings and wish you the very best of luck in your studies.

Mrs D Faulkner
Director of Cowley Sixth Form

Mr Dunford
Head of
Achievement

Mrs Mills & Miss Lester
Reception team

Mrs Joinson
PA to the Principal and
Sixth Form Office Manager





WHY STUDY AT COWLEY SIXTH FORM COLLEGE?

1

Personalised learning

The personalised learning approach ensures that in our small classes, our skilled teachers are responsive to each individual student.

This ensures that all students are supported, stretched and challenged so that they achieve their full potential.

2

Course choice

We offer courses ranging from traditional A-levels to vocational BTEC courses. In addition, we have our popular work-related learning courses.

Want to mix and match A-levels with BTECs? No problem! We offer students the flexibility to blend their studies so they can pick and choose the courses they want.

3

Small class sizes

There are many positives to learning in a small group environment: quicker feedback, more attention/support from the teacher, less chance of students getting left behind and students working in small groups tend to gain confidence more quickly than in a busy group.

4

High achievers

High achievers are supported financially and academically on our tailored programmes: Cowley Honours Programme and our Cowley Scholars Programme.

5

Our university and employer links

Our excellent links with employers and universities means that students benefit from visits to universities as well as relevant work experience placements.



**COWLEY SIXTH FORM
COLLEGE IS...**

...A PLACE TO BELONG AND BE HAPPY

Cowley Sixth Form College is a popular Sixth Form attracting students from schools across the borough and beyond. Student happiness is of paramount importance to us. You matter and we care.

The College is an inclusive Sixth Form and a place where students form life-long friendships. Through the numerous clubs and enrichment activities that we offer, as well as through our break-out spaces and landscaped grounds, there is ample opportunity to socialise and make friends with other students who have similar interests to you.

Get the most from your time at Sixth Form.

We understand the transition from GCSE to Sixth Form studies can be daunting.

We have a purpose-built, staffed Study Area open daily from 8.15am to 4pm to help you make a flying start to your studies.

You will be taught by experienced subject specialists who want you to succeed. The support available, both inside and outside of the classroom, is first class.

You can be sure your teachers will be there for you, to offer help and advice, every step of your learning journey.

With ample ICT resources and space to work independently, or in small groups, we will support you to make the transition to Sixth Form a successful one.



SUPPORTING YOU ON YOUR SIXTH FORM JOURNEY



The move to Sixth Form is an opportunity for you to grow in confidence and gain more independence as a young adult. However, we understand the challenges you may face along the way, and our team are here to support you.

Supporting you in your studies

Year Co-Ordinator

Mrs Wilde is our Year 12 and Year 13 Co-ordinator, who provides support and guidance to our students, as well as to ensure a smooth transition for students joining the Sixth Form. Mrs Wilde is typically a students' first point of contact for all aspects of school life, including helping students to engage in all aspects of Sixth Form life - from independent study to enrichment.

Study Area Supervisor

Cowley Sixth Form College has a full time Study Area Supervisor, Mrs Garner, to support students.

All students are timetabled for two hours a week in supervised study with Mrs Garner to ensure that they are supported in their studies outside of the classroom.

Student Performance and Development Tutor

At Cowley Sixth Form College, we have a specialist team of Student Performance

and Development Tutors (SPDT). We want to get to know you well so that we can help you to achieve your full potential. Your SPDT will be your critical and professional friend whilst you are studying with us. You will meet with them each week and have regular one-to-one meetings to talk exclusively about you.

Your SPDT will help you to settle quickly into college life and they will work with you to ensure you achieve the best results possible. Your SPDT will help you to think about your goals, set targets to enable you to reach those goals and track your progress. Being a sixth form student is about being an independent learner and being able to self-evaluate, which means recognising your strengths and weaknesses and taking responsibility for your own learning.

Your SPDT will have a clear overview of your academic and personal development whilst at college and will support you along your journey to success. They will be a central supportive figure in your transition from school to college, as well as managing all aspects of your progression to Higher Education and employment.

The pastoral support will ensure that every individual is able to seek the help they need through a programme of regular one-to-one meetings in addition to larger group sessions, addressing key aspects

of personal development (e.g. mental health awareness) and with a strong focus on progression planning for life after Sixth Form.

In addition to your SPDT, we have a team of people who are here to support you in your academic studies. Your subject teachers will play a critical role in supporting you in your achievements and these, combined with a range of specific support staff, including your Year Coordinator and Study Area Mentor, will all work hard to ensure that you achieve your full potential.

If you are worried that you may struggle with the associated costs of attending college, you may be eligible to receive financial support through the 16-19 bursary.

The students most in need of financial support will be eligible to receive a bursary of £1,200 each year. In addition, for other students facing genuine financial difficulties, there is the Discretionary Bursary Fund that can support you with travel or equipment costs associated with being a full-time student.

We can help students to understand what they could get and to assist with any applications for support.

Supporting you financially





**COWLEY SIXTH FORM
COLLEGE IS...**

...A CARING AND NURTURING COLLEGE

We are a friendly Sixth Form College and we pride ourselves on having a caring team of Sixth Form staff who provide exceptional pastoral care.

Students will find our expectations of them are of the highest standard and that we will go above and beyond to ensure that they become independent and responsible life-long learners.

Be somewhere that cares.

Throughout the year, special events take place that are dedicated to improving student health and wellbeing.

LIFE AT COWLEY SIXTH FORM



Educational trips

We offer a wide range of trips throughout the year in order for students to explore subjects beyond the classroom.

Educational trips that you could be part of include:

- Lectures & masterclasses
- Galleries and museums
- Theatrical performances
- University visits and overnight stays

UK, Europe and overseas trips

Departments organise trips to enrich learning. Examples of recent trips include: an Art trip to Brighton and a Modern Foreign Language trip to Berlin.

Work experience

All students take part in work experience during Year 12. The college has a dedicated Work Related Learning Mentor to assist in finding suitable placements.

A caring community

Throughout the year, students are encouraged to take part in charity events. Annually, there is a 5K charity fun run that students can take part in. A charity highlight of the year is Children in Need where numerous fun events take place to raise money.

Enrichment

We provide a whole host of opportunities for Sixth Form students to discover and develop new skills outside the classroom. Our exciting programme of enrichment activities are designed to develop personal and social skills. See page 26 for more information.

Sports

There are many teams that you can join during your time at Cowley Sixth Form College to help improve personal fitness whilst making lasting friendships. We have teams in: rugby, hockey, cricket, badminton, netball and football.

Leavers' celebrations

From formal to themed, our Year 13 Leavers' celebrations are a big hit with everyone.

Last year, our Year 13 send off took place at the Moët and Chandon Champagne Bar Suite at Haydock Park Racecourse.

The Oscars-themed evening saw students dressed to impress as they danced the night away late into the evening.





WIFI
THROUGHOUT

A COLLEGE WITH OUTSTANDING FACILITIES



PERFORMING ARTS

SPRUNG DANCE FLOOR
DANCE STUDIO



SPORTS

ALL YEAR 3G PITCH
SPORTS HALL
WEIGHTS ROOM
GYM



MEDIA & GAMING

APPLE MAC SUITES
VIDEO CAMERAS
RETRO CONSOLES
ALIENWARE PCS



MUSIC

PRACTICE ROOMS
GUITARS, PIANOS,
KEYBOARDS, BASS,
DRUM KITS



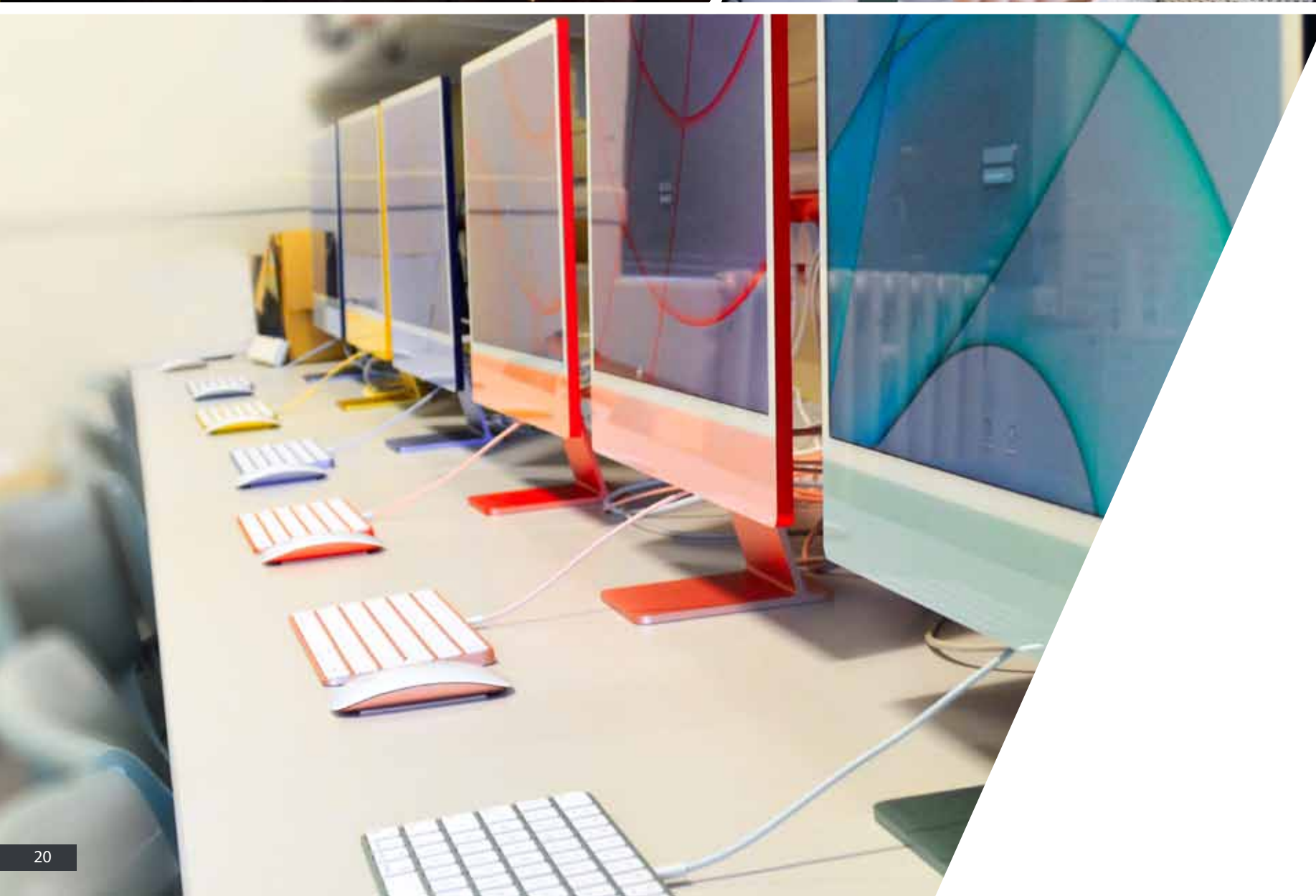
STUDY RESOURCES

2 COMPUTER SUITES
APPLE MAC SUITE
24 HOUR NETWORK ACCESS



ANIMAL CENTRE

HEATED AQUARIUMS
AVIARY
OUTDOOR PENS



Though the Sixth Form campus is steeped in history, we have continually invested in facilities to ensure we can provide a supportive learning environment to meet the needs of every student.

Sixth Form students have access to excellent facilities, including state-of-the-art science laboratories, a fully equipped music department, stunning performing arts theatre and a well-equipped sports centre with a fitness suite, fully sprung dance floor and climbing wall.

A quiet library and study area is located at the very top of the building for independent and supported study.

It is not just on campus that students benefit from our modern and dynamic learning environment; students have 24-hour access to the college network and all software, including the Adobe Creative Suite and Microsoft Office. This access means that students are unrestricted in their studies and are able to work at a time and place that suits them when they are not in college.

HIGH ACHIEVERS



Every academic year, Cowley Sixth Form College welcomes some of the most able students from across the borough and beyond.

Typically with a grade 7, 8 and 9 profile at GCSE, these students trust in the history and heritage we are so proud of at the college to support them on their next academic journey.

We know how important their academic achievements will be. However, we pride ourselves on working to develop the whole individual; providing a wealth of additional opportunities, bespoke interview coaching and practice, plus exposure to a range of influential speakers from across the country.

Getting you to where you **belong.**





COWLEY HONOURS PROGRAMME

The Cowley Honours Programme (CHP) has been designed to enhance the programme of study of students achieving a minimum of 4 GCSEs graded 7 or above.

BENEFITS INCLUDE:

- An opportunity to study additional qualifications, including:
 - Mandarin Chinese
 - Extended Project Qualification (EPQ)
 - Core Maths
- Participation in visits to Oxbridge and Russell Group universities
- Attendance at talks from visiting speakers from university and employment

COWLEY SCHOLARS PROGRAMME

If you achieve five grade 8/9s or more at GCSE, you will be eligible to join the Cowley Scholars Programme (CSP) - specifically designed to support you in applying to the most competitive universities.

The programme was established in 2019 to stretch and challenge our most high achieving students.

This academic Scholarship not only provides you with the prestigious title, but also offers financial support for academic progress, alongside a programme of undergraduate level lectures across the academic year to stretch and challenge you outside of your subject specialisms.

You will also benefit from all aspects of the CHP programme too.

BENEFITS INCLUDE:

- Access to a bespoke CSP reading list, with resources provided
- An experienced CSP tutor who will meet with you every half term
- An undergraduate programme of workshop topics, including: economics, politics, ethics, literature, mathematical reasoning
- Financial support to assist academic progress



Callum Smith

Chemistry A*
Physics A
Maths A*

Now studying Physics at the University of Liverpool

The Cowley Scholars Programme (CSP) provides the students with a series of undergraduate level lectures across the academic year to stretch and challenge them outside of their subject specialisms.

Recent Cowley Scholars lectures have included:

The Quality of Questions – critical thinking and conspiracies
The Mathematics of Covid
Who was the Real Hamilton?
The History of Pride

In addition, through our partnership with Speakers for Schools, we are able to offer students additional exciting and interesting talks.

Cowley Honours Programme students are given access to a bespoke reading list, with books provided. Books currently on the list include:



STUDENT SUCCESSES 2023



Callum Smith

Chemistry	A*
Physics	A
Maths	A*

Now studying Physics at the University of Liverpool



Rose Springford

Biology	A
Chemistry	A
Geography	A
Maths	A

Now studying Biochemistry at the University of Liverpool



Tanishka Tiwari

Biology	A*
Chemistry	A
Maths	A
Law	A

Now studying Medicine at the University of Exeter



Dom Cummings

Musical Theatre	Distinction *
Music	Distinction*
Photography	A*

Now studying Musical Theatre at the University of Central Lancashire



Thomas Fisher

History	A
Psychology	A
Physics	C

Now studying Psychology at Lancaster University



Luke Cain

Computing	Distinction
Creative Digital Media	Distinction*
Geography	C

Now studying Computer Science at the University of Liverpool



Keira-Leigh Allen

Art	A
Biology	C
Criminology	A

Now studying Art Foundation Degree at St Helens College



Sophie Middleton

Psychology	B
English Language	A
English Literature	B
Criminology	A

Now studying Law at the University of Liverpool



Kaitlyn Mower

Nursing Cadetship	Distinction*, Distinction*
	Distinction*

Now studying Adult Nursing at Liverpool John Moores

SPORT AND ENRICHMENT



There is more to life at Cowley Sixth Form College than gaining your qualifications.

We want you to achieve your potential and flourish in and out of the classroom.

It is important that all of our students participate in and complement their academic studies by taking advantage of our extensive sporting and enrichment programme. We know that students face a challenging and rigorous process to gain entry to prestigious universities and employment. They will need to compete

with a talented pool of applicants with the same aspirations, grades and personal profile.

Enrichment is about developing core skills that are vital for success well beyond the academic world and help to create capable, adaptable and ambitious young people.

As well as developing you as a person, enrichment is a social part of college life where you will be able to make new friends with similar interests. The enrichment programme is available to all students at Cowley Sixth Form College and

aims to help develop the knowledge and skills for life after Sixth Form, whether that be further study, an apprenticeship or employment.

New for 2024, students have the opportunity to study Spanish, French or German as part of enrichment.

Students can participate in a wide range of activities that includes: [sport, sports coaching, music, drama, art, college productions, first aid, chess, mindfulness, LGBTQ+ and charity work.](#)



A ONCE IN A LIFETIME EXPERIENCE

In the summer of 2023, a number of our students headed to Kenya for a month as part of a Camps International project.

During this adventure with real impact, our students worked on marine conservation and environmental projects, as well as helping a community to build a classroom.

Our students saw a great deal of Kenya and found time to snorkel, hike, go on an amazing safari and to see animals in their natural habitat.

Keira, a student who was part of the Kenya experience, said: "The trip to Kenya is undoubtedly the highlight of my life so far. Every new experience taught me

something—either a new skill or something personal—about myself. The friendships and memories that I made on this adventure will last a lifetime."

[In 2025, we will be working with Camps International again to offer students the chance to be part of an expedition to Cambodia.](#)



EXTENDED PROJECT QUALIFICATION (EPQ)

The Extended Project Qualification (EPQ) is a course that gives students the opportunity to study a subject of their choice in depth.

Students are taught the core skills to form an argument, research valuable sources, analyse texts, manage projects and extend writing. Students then work independently, but with support and guidance from a supervisor, to apply the newly taught skills to the subject they have chosen to research.

During the course, students will develop their analytical skills to produce their project. This can be either a research report (which will be 5,000 words in length) or a production (accompanied by a 1,000-word report).

You will:

- Have an excellent command of a topic to quote on your university application and to discuss at interview
- Improve your personal development and confidence
- Acquire extra vital UCAS points which provide insurance for university conditional offers



DID YOU KNOW?

EPQ will add value to your university application.

It is a formal 'level 3' qualification that attracts slightly higher UCAS Tariff points than an AS-level.

EPQ provides very clear evidence that you have interests which go beyond the classroom.

EPQ demonstrates that you are capable of independent reading, research and essay writing that is the mainstay of most undergraduate degrees.

The EPQ provides students an exciting and enjoyable opportunity to work on topics which are related to their personal interests and plans for life beyond school. Here are some recent topics that our students worked on:

- Design and build environmentally-friendly sneakers
- What makes stand up comedy funny?
- Why are people so emotionally attached to animals?
- Should the age of criminal responsibility be increased?
- To what extent did Elizabeth II modernise the British monarchy?

ENRICHMENT LEADING TO A QUALIFICATION

Core Mathematics

Core Mathematics, as part of Cowley's Enrichment programme, is equivalent to an AS-level.

Core Mathematics starts at a lower level than A-level Mathematics and continues at a slower pace, allowing students, who would otherwise not be able to keep up with the demands of A-level Mathematics, to still enjoy a valued and worthwhile qualification. This one-year course follows the GCSE approach with lots of number, algebra, shape, space and data handling.

Employers and universities have long stated that a greater number of students should follow Mathematics courses at Sixth Form.

Entry requirements:

Students need a grade 5 or 6 from the GCSE higher tier Mathematics examination to study this course.

Mandarin Chinese

All Year 12 students have the opportunity to study this fascinating language.

The course consists of a one-hour lesson per week over 30 weeks. Students will gain competence in speaking, listening, reading and writing.

Students will learn to construct Chinese characters and will quickly develop accurate reading skills. Successful completion of the course may certainly impress future employers and university admissions staff.

Assessment is by means of an end-of-year examination. This examination, the HSK level 1, is an internationally recognised qualification. There is also an opportunity to study for the HSK 2 examination in Year 13. Previous Cowley students have managed to score 100% on HSK 1 and over 80% on HSK 2.

New for 2024, students have the chance to study an IB in Mandarin Chinese.

CAREERS GUIDANCE AND WORK EXPERIENCE



Impartial careers advice and guidance is available for all students at Cowley Sixth Form College.

During your time here, you will be supported in developing an appropriate career plan. In Year 12, you will be allocated time to participate in a career placement, as part of the college Progression Week.

Initially, your tutor will give you advice on education, training and work opportunities, as well as assisting you with your applications for universities or jobs.

We offer one-to-one interviews, careers workshops and access to a range of careers resources and software.

Your tutor will work with you to plan your opportunities for progression and our Work-related Learning Mentors will support you in finding relevant career placements.

Cowley Sixth Form College has established a wide network of partnerships which has enabled us to offer relevant and valuable career placements.

In addition to this, students participate in careers and apprenticeship events, visits to local organisations, volunteering and mock interviews.



Students taking part in mock interviews as part of the College's Progression Week





CHOOSING WHAT COURSES TO STUDY

The curriculum at Cowley offers students the chance to follow their interests and play to their strengths.

A-LEVELS

Want to follow the traditional academic route to university? We offer a wide choice of A-levels which are delivered by specialist teachers in a modern campus.

VOCATIONAL COURSES

Designed to meet the needs of employers, BTECs are work-related qualifications for learners taking their first steps into employment or planning to enter university.

LEVEL 2 FOUNDATION

A course that is unique to Cowley, allowing students with modest GCSE results to study a Cambridge National in Business, in conjunction with Functional Skills and GCSE resits in Mathematics and English Language.

WORK-RELATED LEARNING PROGRAMMES

Level 3 Nursing Cadet programme allows students to study for an Extended Diploma in Health & Social Care alongside completing over 600 hours of work placements in the NHS.

The Level 2 Construction course provides an opportunity for students to gain work experience in this industry alongside the study of relevant courses in the college environment.

HOW MANY SUBJECTS YOU CAN CHOOSE

A typical combination would be between three or four subjects. Students are able to choose A-levels, BTECs, or a combination of both.

Please note that all courses, including their entry requirements, are subject to change and are delivered depending on demand.

ENTRY CRITERIA

To view the most up-to-date entry criteria, please visit cowleysixthform.org.uk/entry-requirements

A-LEVEL

Want to follow the traditional academic route to university?

We offer a wide choice of A-levels which are delivered by specialist teachers in a modern campus.

An A level is a two-year programme that culminates in exams. Some courses have a component of coursework and/or controlled assessment.

New for this year we are delighted to offer students the chance to study A-level Business.

HOW MANY SUBJECTS YOU CAN CHOOSE?

A typical combination would be between three and five subjects. Students are able to choose A-levels, BTECs, or a combination of both.

ENTRY CRITERIA

To study at Cowley Sixth Form College, you must have achieved a minimum of five GCSEs or equivalent, graded 9 - 4, across four separate subjects, including GCSE Mathematics and English Language.

In addition, a positive college interview is required.

A few courses have specific entry requirements. Relevant details can be found on individual subject information pages.



A-LEVEL COURSES

Art and Design	38
Biology	38
Business	38
Chemistry	39
Criminology (Applied Diploma)	39
English Language	39
English Literature	41
Ethics, Philosophy & Religion	41
French/German/Spanish	41
Further Mathematics	42
Geography	42
History	42
Law	43
Mathematics	43
Photography	43
Physical Education	44
Physics	44
Politics	44
Psychology	45
Sociology	45



ART AND DESIGN

This exciting course covers all the core elements of Art and Design and is designed to allow you to develop your artistic skills and gain confidence.

The course is flexible and offers students the freedom to explore and work across the broad spectrum of art disciplines.

BIOLOGY

Biology is fascinating and involves studying everything from the molecular structure of cell components to animal behaviour and the interactions of organisms with their environment and each other.

The origins of living things and how they work is fundamental to the world we live in and, whether your interest is in the animal world, marine life, humans or plant life, the study of Biology is the core of further knowledge and discovery.

In addition to the College entry requirements, a grade 6 - 6 or above in GCSE Combined Science, or a grade 6 in GCSE Biology is required.

BUSINESS

Business is one of the most dynamic subjects you can choose! You will be immersed in the business world exploring and critically reviewing topics from a national and global perspective.

Studying Business can really give you a sense of direction for your future career, broadening your horizons. You will learn how the business world works as you develop a good understanding of leadership, marketing, financial performance, managing human resources, alongside considering the impact of external influences, competition, change and globalisation on decision making and strategy.



CHEMISTRY

Chemistry is at the forefront of advances in designing new materials, energy use, drug development and technology.

Chemistry explores the building blocks of all living and nonliving substances and tries to explain why certain substances interact with each other, how they interact and what happens when they do.

In addition to the College entry requirements, a grade 6 - 6 or above in GCSE Combined Science, or a grade 6 in GCSE Chemistry is required.

Students are also required to achieve a minimum grade 6 in GCSE Maths, and students who are not sitting Maths A-level should undertake a Core Maths element in their timetable.

CRIMINOLOGY LEVEL 3 APPLIED DIPLOMA

Ever wondered...

- What makes someone a serial killer?
- How do we decide what behaviour is against the law?
- What investigative techniques are available to help to identify the culprit?

This two-year course will hopefully help you answer these questions and more...

ENGLISH LANGUAGE

If the power of words interests you and you're keen to discover how written and spoken language works in our changing world, then this is the course for you.

Both dynamic and relevant, this course explores how our language has evolved over time. Students will explore a variety of contexts, genres and audiences and will produce original creative writing pieces.

In addition to the College entry requirements, a grade 5 or above in GCSE English Language is required.



STUDENT SUCCESS

Tanishka Tiwari

Biology	A*
Chemistry	A
Maths	A
Law	A

Now studying Medicine at the University of Exeter



ENGLISH LITERATURE

If you're passionate about reading, then English Literature is the qualification for you. By encountering a range of views and emotions in modern and classic texts, students can explore important issues while voicing their own opinions.

Our course is challenging and also fun, with plenty of theatre trips and films to enjoy.

In addition to the College entry requirements, a grade 5 or above in GCSE English Language or English Literature is required.

ETHICS, PHILOSOPHY & RELIGION

Ethics, Philosophy & Religion at A-level is very different from what you may have studied already. You will study three separate units: Philosophy, Ethics and Christian Theology.

We consider complex issues and investigate the nature of religious experience and whether these can be explained by science, psychology or supernatural means.

This course allows you to get your teeth into a whole range of controversial topics: we don't just study them, we intellectually attack them!

FRENCH/GERMAN/SPANISH

Students will study highlights of the target language country's artistic culture, including music and cinema, and learn about political engagement. Students also explore the influence of the past on present-day target language communities.

Learning a language is a long term investment – an asset to adult life.

In addition to the College entry requirements, a grade 5 or above at GCSE in the language to be studied is required.



Take a look at all the courses we offer at cowleysixthform.org.uk/our-courses



FURTHER MATHEMATICS

A-level Further Mathematics provides a great opportunity for enthusiastic and capable mathematicians to broaden their subject knowledge.

You will be introduced to interesting new areas of pure mathematics and will start to see real beauty in mathematics.

Further Mathematics is taken in addition to A-level Mathematics.

In addition to the College entry requirements, a grade 7 or above in GCSE Mathematics is required.

GEOGRAPHY

Geography is concerned with many key issues of the 21st century: biodiversity, sustainability, population change and climate change. Topics studied will include: Water and Carbon Cycles, Ecosystems, Coasts, Population, Changing Places and Global Governance with reference to Antarctica.

Students will study current issues that shape the world they live in as well as developing a variety of employable skills, such as GIS skills, data analysis and photograph analysis.

HISTORY

Everything we do, everything that happens every day is part of and defined by history. So why wouldn't you want to know more?

Studying history provides opportunities to engage with ideas, societies and people that existed centuries ago and sometimes merely decades ago. In short, history is an opportunity. An opportunity to better understand the society you inhabit and the reasons for it.



LAW

Through studying A-level Law, you will learn about how laws are made, how the criminal justice system works in England and how to work out whether someone is criminally liable for a particular offence.

In addition, you will learn about other less familiar aspects of law, such as why our society feels that the rights of a trespasser should be protected.

As well as helping you to wrestle with some of society's big questions, the application of the Law to the facts of scenarios will develop your analytical and problem-solving skills.

MATHEMATICS

A-level Mathematics covers a wide range of topics that will extend your knowledge of algebra and trigonometry and introduce you to exciting new concepts such as differentiation and integration.

Some choose Mathematics simply because they love the mathematical challenge it offers. There is a real beauty in Mathematics that will start to show itself the more you are exposed to it.

In addition to the College entry requirements, a grade 6 or above in GCSE Mathematics is required to study this subject.

PHOTOGRAPHY

Photography is about using the camera as a creative tool to record the world around you.

Developing an excellent understanding of composition is the foundation for all photography; you will develop your own great sense of style and self expression that will engage any audience.

Photography develops a wide range of analytical, critical thinking and problem-solving skills, which will be useful at university and in future careers.





PHYSICAL EDUCATION

The subject offers a multidisciplinary approach to the study of movement, performance and behaviour in relation to PE, sport, leisure and recreation.

This course covers a wide range of theoretical areas such as: Anatomy & Physiology, Biomechanics and Sports Psychology.

A-level PE students work closely with Saints' physiotherapists as part of their anatomy and physiology lessons and during the sports injury unit.

PHYSICS

Are you interested in finding out how the universe works? If so, then this is the course for you!

The first year begins with the weird and wonderful world of Particles and Quantum Physics. Your second year will develop your understanding further, so you'll actually understand what $E=mc^2$ is about. We look at Astrophysics to find out how to estimate the age of the universe.

In addition to the College entry requirements, a grade 6 - 6 or above in GCSE Combined Science, or a grade 6 in GCSE Physics is required. A GCSE Mathematics grade 6 or above is also required.

POLITICS

Lively, relevant, thought-provoking... however you describe Government & Politics, there's no denying that it's one of the most interesting and engaging A-levels you can study.

Government and Politics offers a dynamic, topical and fascinating look into political systems around the world, from Westminster to the White House. Students will study how political parties and ideologies are formed, how political decisions are made and who has the power and authority to make them.

PSYCHOLOGY

Psychology is a subject that focuses on human behaviour and mental processes. A big part of the course is looking at theories to explain certain aspects of human behaviour and assessing the differences across cultures, genders and approaches. The evaluation of ideas through hypotheses and research evidence is a key aspect of Psychology.

This qualification will certainly help towards a career in the Police, becoming a Paramedic, Nurse, Veterinary Nurse or anything that requires empathy and understanding.

SOCIOLOGY

Ever wondered how we developed into the society we are today? How the way you see yourself determines the way people identify you?

A-level Sociology will help you to make sense of the society we live in and to understand the cultural and identity issues which affect us all.

You will learn a number of skills including the use of evidence to support your arguments, how to investigate facts and critical thinking. It is relevant to

the society you live in, so you are bound to enjoy learning about topics that are relevant to everyday life; plus it opens the door to a fantastic range of interesting careers.



BTEC

Designed to meet the needs of employers, BTECs are work-related qualifications for learners taking their first steps into employment or planning to enter university.

BTECs tend to be more vocational and practical, which some learners find suits them perfectly.

Did you know that nearly all universities accept BTECs in relevant subject areas, similar to how they would with equivalent A level qualifications.

HOW MANY SUBJECTS YOU CAN CHOOSE?

A typical combination would be between three and five subjects. Students are able to choose A-levels, BTECs, or a combination of both.

ENTRY CRITERIA

To study at Cowley Sixth Form College, you must have achieved a minimum of five GCSEs or equivalent, graded 9 - 4, across four separate subjects, including GCSE Mathematics and English Language.

In addition, a positive college interview is required.

A few courses have specific entry requirements. Relevant details can be found on individual subject information pages.



BTEC COURSES

Animal Care	48
Art and Design: Fashion and Graphics	48
Children's Play, Learning and Development	48
Computing	49
Construction	49
Creative Digital Media Production	49
Creative Digital Media - Film and Video	51
Engineering	51
Health and Social Care	52
Music Performance	52
Professional Musical Theatre	52
Nursing Cadetship	53
Science	53
Sports Coaching and Development	53
Travel and Tourism	55
Uniformed Protective Services	55



ANIMAL CARE

This course will give you a full understanding of animal care, covering the practical, scientific and ethical aspects of caring for animals.

As part of the course you will work with a variety of birds, mammals and reptiles in our bespoke animal care facility.

If you love animals, taking care of animals and learning about their natural environment and behaviour, then Animal Care is the course for you. It is an exciting and varied course where you are able to care for and look after a wide range of animals, as well as the opportunity to visit local farms to work with livestock.

ART AND DESIGN: FASHION AND GRAPHICS

Are you passionate about design and see yourself working in the rapidly growing creative industries?

Learners will study visual recording and communication, critical analysis and production skills to produce art and design outcomes.

If you are creative with an interest in the arts, then this is the ideal course for you to study.

CHILDREN'S PLAY, LEARNING AND DEVELOPMENT

The aim of this course is to provide learners with the opportunity to learn about the care, learning and development of children.

Students will have the opportunity to develop their skills and the knowledge necessary to work with children and young people.

Students are given access to a wide range of specialist equipment, including interactive babies, pregnancy simulator and model infants exposed to various lifestyle induced disorders.



COMPUTING

If you intend to pursue a career in computing, ICT or games development, or have a strong interest in this area, then the BTEC Level 3 Extended Certificate in Computing is perfect for you.

The areas covered in this course include: Principles of Computer Science, Fundamentals of Computer Systems, IT Systems Security and Encryption along with one optional unit chosen from App Development, Website Development and Human-Computer Interaction.

CONSTRUCTION (LEVEL 2)

This course offers an insight into the construction industry ranging from the initial planning stage through the design and building process of housing, industrial and commercial buildings.

This course offers two days a week on placement, and you will have the chance to build new working contacts, relevant knowledge and life-long skills.

It is anticipated that students will typically have a GCSE profile of subjects graded 3/4 and may not have Mathematics or English Language GCSE at grade 4 or above. In this instance, we can offer a resit in one of those subjects.

CREATIVE DIGITAL MEDIA PRODUCTION

If you intend to pursue a career in Digital Publishing, App Development, Graphic or Website Design, or have a strong interest in this area, then the BTEC Level 3 Extended Certificate in Digital Media Production is perfect for you.

This course will give students the opportunity to learn about the digital world, including app production, website production and coding, digital graphics and manipulation linked to digital publishing and photography.

STUDENT SUCCESSES

Luke Cain

Computing	Distinction
Creative Digital Media	Distinction*
Geography	C

Now studying Computer Science at the University of Liverpool



Engineering student profile

Emily is currently studying Engineering, A-Level Maths and A-Level Physics.

Emily said that she finds studying Engineering fun and particularly enjoys the practical elements of the course.

After Sixth Form, Emily is hoping to start a career in the Royal Air Force, either as a Pilot or an Engineer.

"I love being able to look at something and know how it's made!"

- Emily



CREATIVE DIGITAL MEDIA - FILM AND VIDEO

This qualification is designed to provide a technical introduction to digital film and video production. Learners develop skills in areas such as single camera techniques, storyboarding and film editing.

In your first year, you will develop the necessary skills needed to produce a short film or trailer. Your second year will expand your knowledge and skills further to enable you to respond to a brief from a client to produce a moving image product to help with their business.

ENGINEERING

Delivered over two years, this Level 3 Extended Certificate will provide students with both practical and theoretical skills to develop a career in the engineering sector. Each unit focuses on key elements of industry.

Study Engineering and start the journey to becoming a highly skilled engineer who will be able to work within a variety of engineering disciplines.

In addition to the College entry requirements, a grade 5 or above in Mathematics and a grade 5 or above in Science is required.



Take a look at all the courses we offer at cowleysixthform.org.uk/our-courses



HEALTH AND SOCIAL CARE MUSIC PERFORMANCE

This popular course offers a great foundation of study for the health and social care sector.

You will learn about the various care settings, as well as getting a chance to apply all you've learnt into a practical setting on work placements.

This course offers a practical and vocational route into fields of Health & Social Care employment.

Students are given access to a wide range of specialist equipment and they benefit from placements within the St Helens & Knowsley NHS Trust.

If you are looking to become a cutting-edge music performer, then this course is for you.

This course will provide you with access to some of the leading products and artists within the industry. We want to develop the student's skills and experiences to get the gig. The gig might be the job, the session, the commission, the deal or the tour. You will receive one free instrumental lesson a week. At Cowley Sixth Form College, we aim to ensure that you gain the experience and develop the skills to be able to go wherever your work takes you.

PROFESSIONAL MUSICAL THEATRE

This is a two-year practical training course during which you have the ability to achieve a qualification that is equivalent to one and a half A-levels.

Here at Cowley Sixth Form College, we focus on the development and refinement of vocal, acting and dance skills and techniques preparing you for drama school and university training.

If you have an interest in singing, dancing or acting and your dream is performing in musical theatre shows, then this is the course to help you develop your talents.

NURSING CADETSHIP

This programme is a brilliant opportunity to start your nursing career, achieve a valuable qualification and gain plenty of practical experience.

You will study a BTEC level 3 Extended Diploma in Health and Social Care (equivalent to three A-levels).

Your placements within St Helens & Knowsley NHS Trust consist of two full days per week in different care settings.

The course includes:

- First Aid
- Work experience within the NHS
- Uniform
- DBS check

SCIENCE

This course consists of units covering topics across Physics, Chemistry and Biology and there is an emphasis on practical investigative work.

You will enjoy a wide range of learning experiences, including many practicals. One practical involves producing a sample of aspirin, purifying it and testing its purity using melting point apparatus.

In addition to the College entry requirements, a grade 4 - 4 is required in Combined Science.

SPORTS COACHING AND DEVELOPMENT

As part of this course, you will learn about the different aspects of sport, from coaching to fitness testing and the organisation and development of sport.

This course is ideal for those who want to pursue the academic study of sport.

This qualification allows learners to personalise their study towards the sports and disciplines of their choice.



Kaitlyn Mower

Nursing Cadetship

Distinction*
Distinction*
Distinction*

Now studying Adult Nursing at
Liverpool John Moores



TRAVEL AND TOURISM

The study of Travel and Tourism aims to develop a student's knowledge and experience in geography, customer service and employability skills.

The objective of the course is to open doors to enable students to move directly to employment or progress onto university.

The course will develop key skills such as creativity, problem solving, communication, and business management which are transferable into the world of employment.

UNIFORMED PROTECTIVE SERVICES

The popular course is designed to equip students with the knowledge, understanding and skills needed for a career in the public and uniformed services.

But, this shouldn't put off those who aren't considering a career in public services, as this course includes many sociological, political, leadership and physiological units. The course can be personalised by learners to match the public service that they are interested in.



Take a look at all the courses we offer at
cowleysixthform.org.uk/our-courses

FOUNDATION PROGRAMME

FOUNDATION LEVEL 2

This course is specifically designed to provide a transitional year for students who are not yet ready to embark on a Level 3 programme but are keen to move on to a Sixth Form College.

The intention is that students would be with us for a total of 3 years; 1 year on this programme and on successful completion, another 2 years studying the Level 3 courses of their choice.

A designated study base and a small team of teachers delivering the programme provides a supportive environment in which students can mature, develop and achieve further qualifications in core subject areas. This would enable them to progress to further studies or apprenticeships following the successful completion of this one-year course.

Cambridge Technical in Business (L2) 9 hours

Functional Skills and GCSE English Language 9 hours

Functional Skills and GCSE Mathematics 9 hours

Enrichment 2 hours

Tutorial 2 hours

Supervised Study 4 hours

Entry Requirements

This course is designed for students who have achieved 4 or 5 GCSE's or equivalent graded 4 - 9, but have achieved a minimum 2/3 in both Maths and English Language.



APPLYING TO COWLEY SIXTH FORM

OPEN EVENINGS

Thursday 28th September
Thursday 16th November

WHAT TO DO WHEN

September
to December

January
to April

May
to July

August



Now is the time to think about what subjects you want to study at our first Sixth Form Evening

November Open Evening

Your chance to return to ask questions and finalise subject choices

Submit your application form

Attend an interview

Receive a formal offer of a place at college

Attend our New Student Welcome Day to trial your subject choices

Collect your GCSE results and enroll!

How to apply

There are two ways to apply:

1. Apply online. You can complete your application to join Cowley Sixth Form College online, go to: cowleysixthform.org.uk
1. Complete a paper application form (you can request an application form by calling us on 01744 678 030). Once completed, return to Cowley Sixth Form College.

FREQUENTLY ASKED QUESTIONS

How many subjects will I study?

Most students will study three subjects in the Sixth Form, though high achievers may be able to take a fourth or even fifth subject.

Students can take A-levels, BTECs or a combination of both qualifications.

How and when do I apply?

Applications open in September and run through until enrolment in August. However, we advise applicants to submit their application before the Christmas break.

How much work will I get?

Work will be different for each subject, but as a rule of thumb, you should dedicate at least 4/5 hours per week per subject for independent study.

What are class sizes like?

Class sizes are usually smaller than at GCSE, to allow teachers to give more of their time each lesson to each student. The small class sizes allow for extra support from your subject teachers.

Is Sixth Form like high school?

Sixth Form life is totally different to what you will be used to in high school.

You will study around three to five subjects and you will have time in which to study further or to relax.

The teacher/student relationships are different too; you will be treated like an adult and expected to be responsible with independent study time and also in making sure you complete work set.

If you still have questions or queries about life at Cowley Sixth Form, please contact us or visit us at one of our Open Evenings and we will be happy to answer.



***We see the person
and
the potential***



COWLEY SIXTH FORM COLLEGE

Principal: Mr R Cormack

Director of Sixth Form: Mrs D Faulkner

Hard Lane, St Helens, Merseyside, WA10 6LB

Tel: 01744 678 030 Visit: cowleysixthform.org.uk

